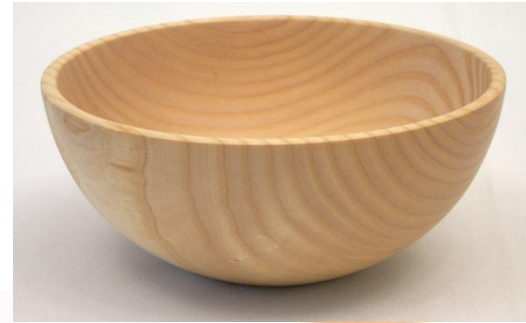


Buf's Basic Bowl



I wish I had known...

These are not in any order, nor are they prioritized:

- How to **sharpen** my tools.
 - When I first started, I didn't realize that I was scraping with my tools instead of cutting.
 - I really didn't start to turn well until I learned how to sharpen.
 - If the tool is almost sharp, it will almost cut.
 - If in doubt, sharpen the tool.

Being able to sharpen your tools freehand doesn't make you a wood turner...turning wood does.

Don't feel bad. Make or buy a jig.



JET

ROLAIR
SYSTEMS

Expanding Top
for Any Table

- Have your sharpening station **next** to your lathe.
- You will sharpen more often.



- **Organize your shop.**
 - Have a specific place for chucks and tailstock centers and place everything back in the same place **immediately** after using.



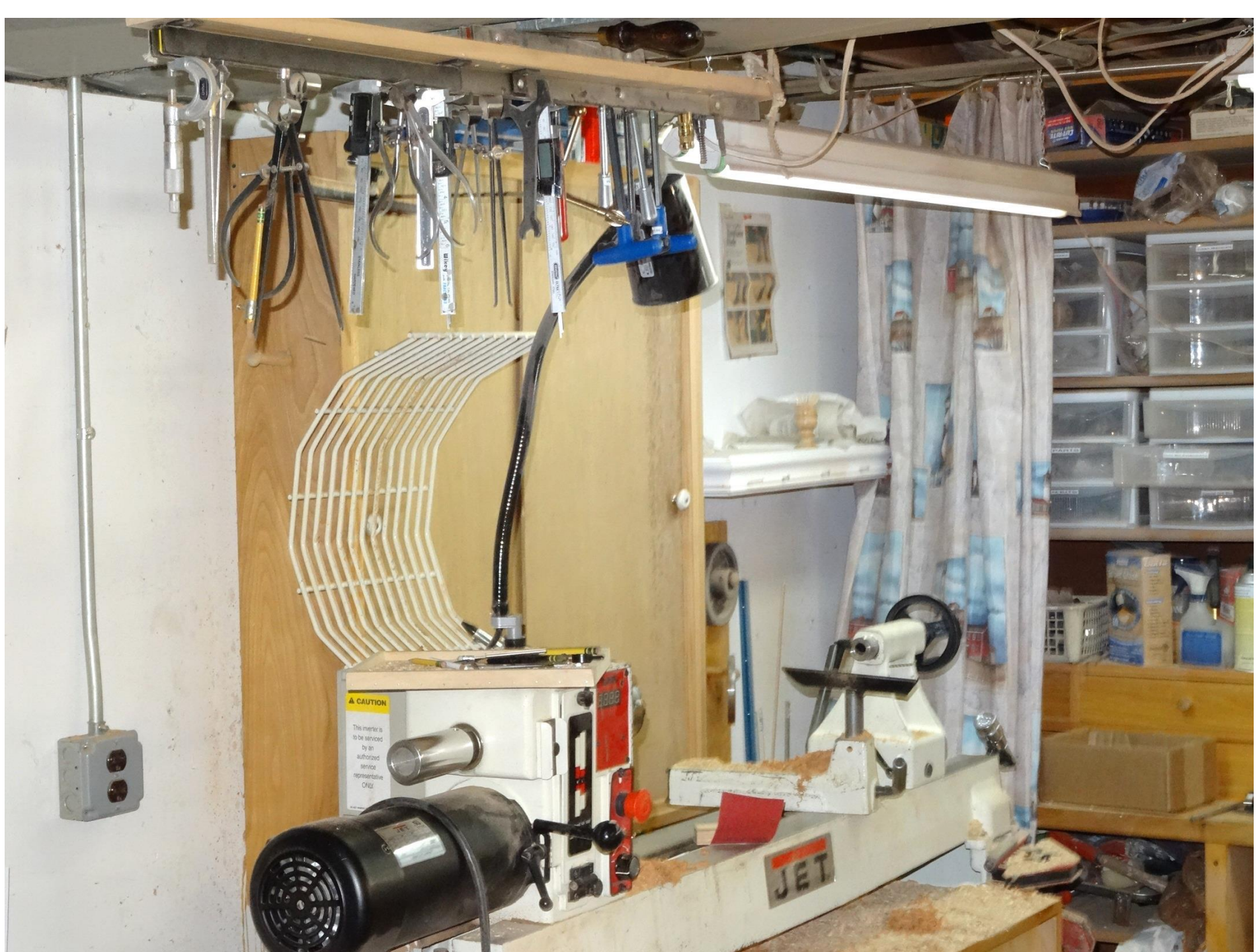


Organize your sandpaper near your lathe.













Reminder notes

Fraction/decimal
equivalents.

Deadly farts

Pencil sharpener

Pyrography

Radio

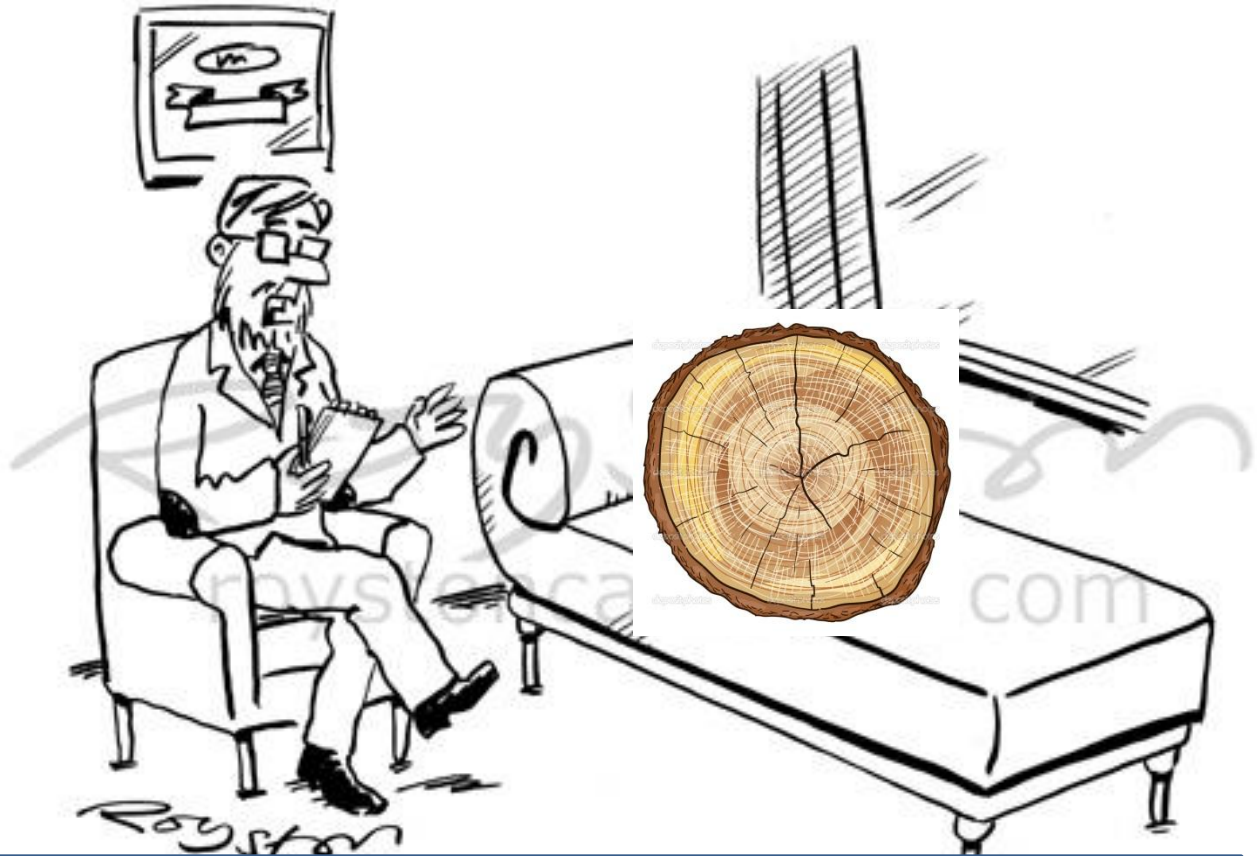
?????????

Upper portion of desk



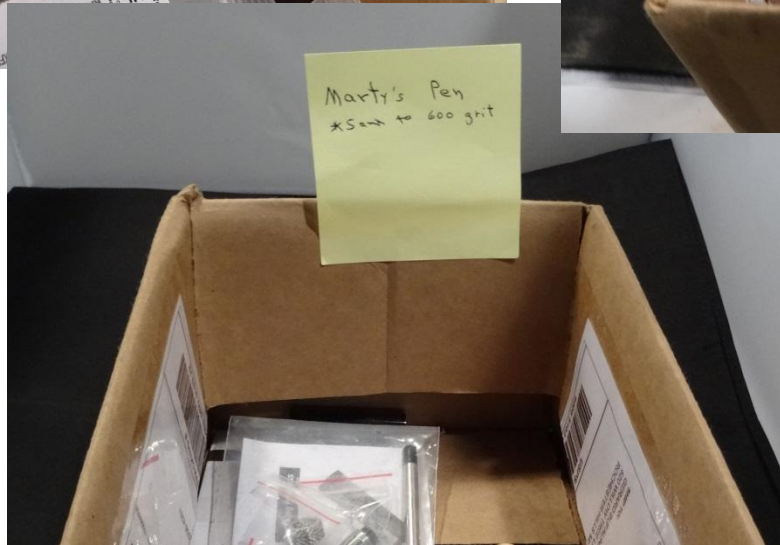
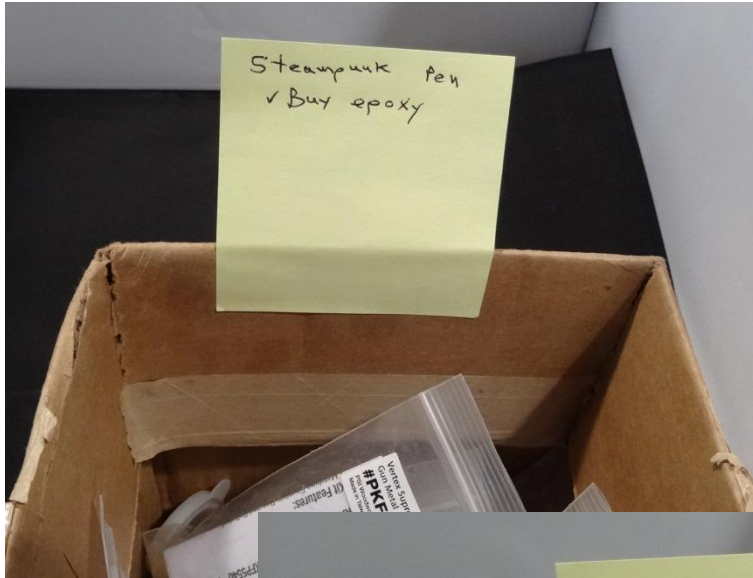
- 100 grit sandpaper does not morph into 120 grit.
- Rub the **bevel**.
 - It actually means **GLIDE** the bevel.
 - **Anchor, Bevel, Cut...** Betty Scarpino
- Watch videos on **YouTube**.
- Many of our members have **web pages**.
- Look at **Etsy.com** for inspiration.
- **Vibration from tool:** The toolrest should be as close as possible.
 - Minimize the overhang of your tool over the toolrest to minimize vibration.
- **Rubber band** or **bungee cord** to keep the tailstock handle from falling.

Wood does not talk to you. But it will **dictate** to you: knots, cracks, soft spots, bark inclusions.



...and how long have you been talking to woodturners?

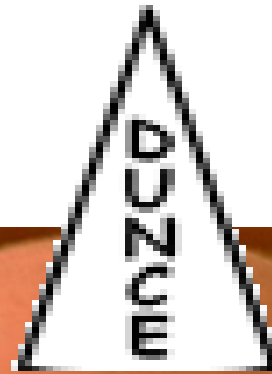
Place unfinished projects in boxes and label them.
It helps to add a note as to where you left off.



- Let there be lots of **light** in your workshop.
- **Wear gloves.**
 - Dangers of rims cutting hand.
- Have a good dust collection system. It's worth the money.
- Use a comfort mat.
- **Before turning on the lathe, make sure that the speed is set at **zero**.**
- **Always** wear face protection----**no matter what.**
- **Safety** is not boring.

THE DUNCE CAP

The dunce cap was not placed on the head of a bad child, but instead on the head of the slow learner.



BIG boo-boo



**Go sit in
the corner,
dumbass.**



Laws of Woodturning

Dale Nish

1. You can always make it smaller.
2. It's only wood, and you can burn it at any stage.
3. Catches are not problems, but rather **artistic opportunities**.
4. The longer it's been since you've had a catch, the closer you are to having one.
5. Practice may not make you perfect, but it certainly produces a lot of shavings.
6. If you're not having fun, you are probably doing something wrong.
7. When things happen on the lathe, they happen **FAST**.

Woodturning Design: Spring, 2009

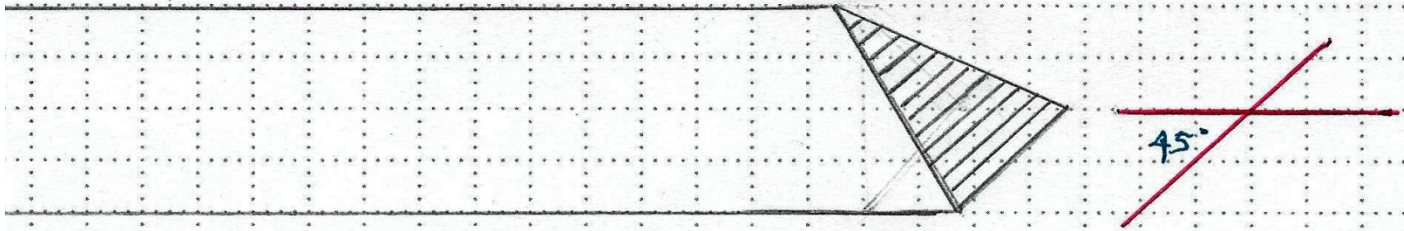
**Keep your toolrest smooth , your ways
clean and your heart pure...** and you too will become
a good turner.



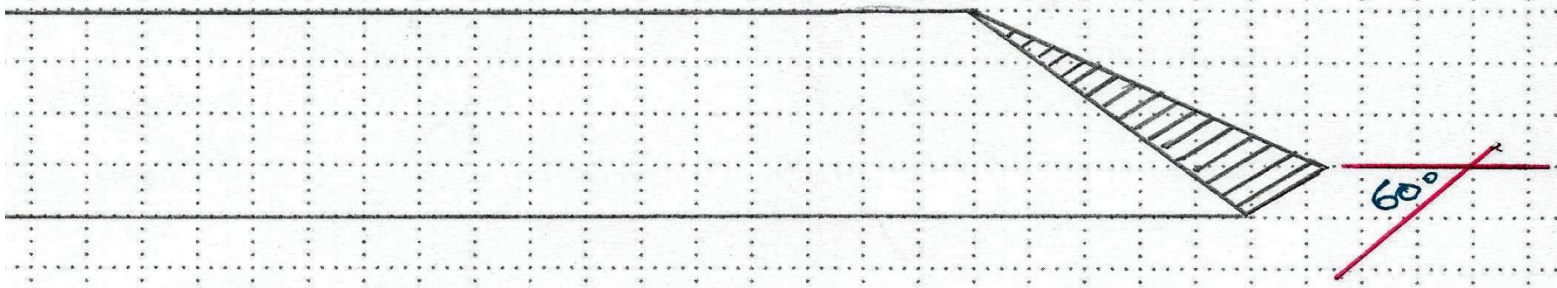


Types of Bowl Gouge Grinds

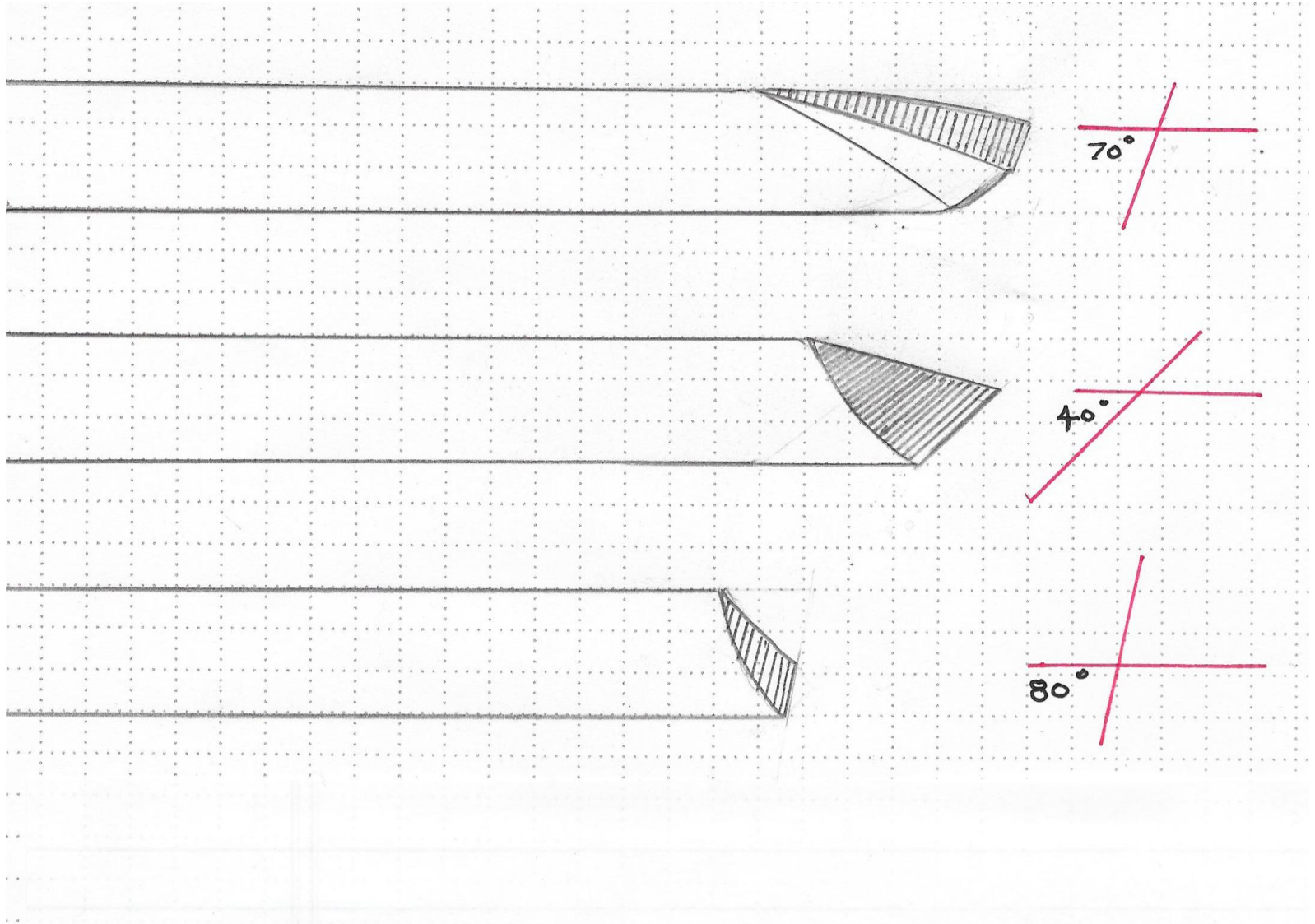
Standard



Ellesworth



Grinds in Between

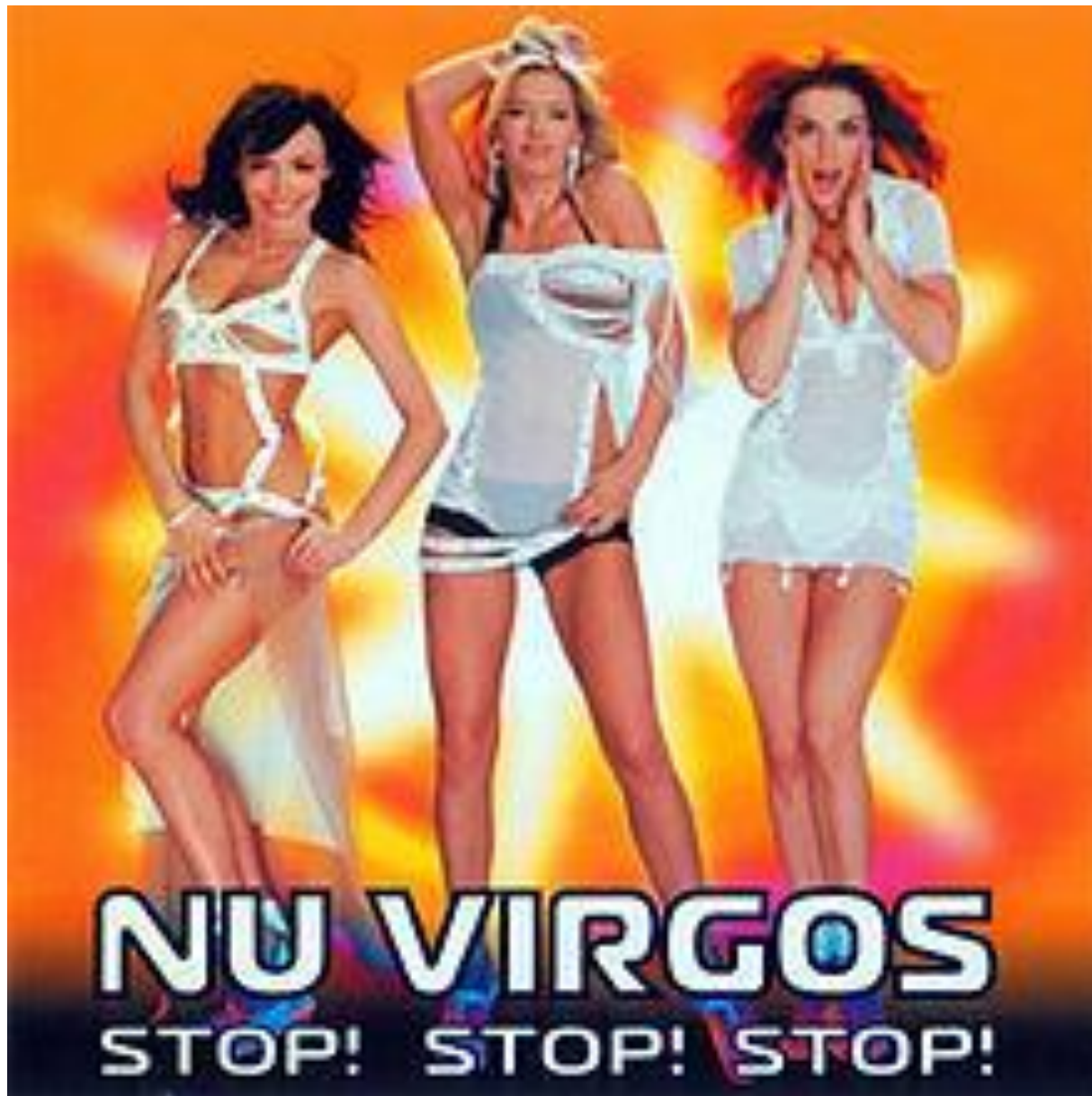


Types of Cuts

- Push Cut
- Pull Cut
- Scraping Cut
- Shear Scraping Cut

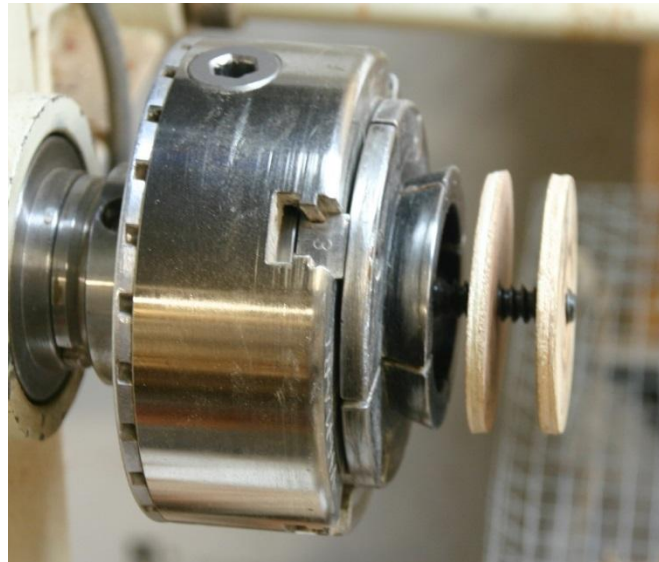
The Unkindest Cut of All...





Determine the size of the drill bit you will use.



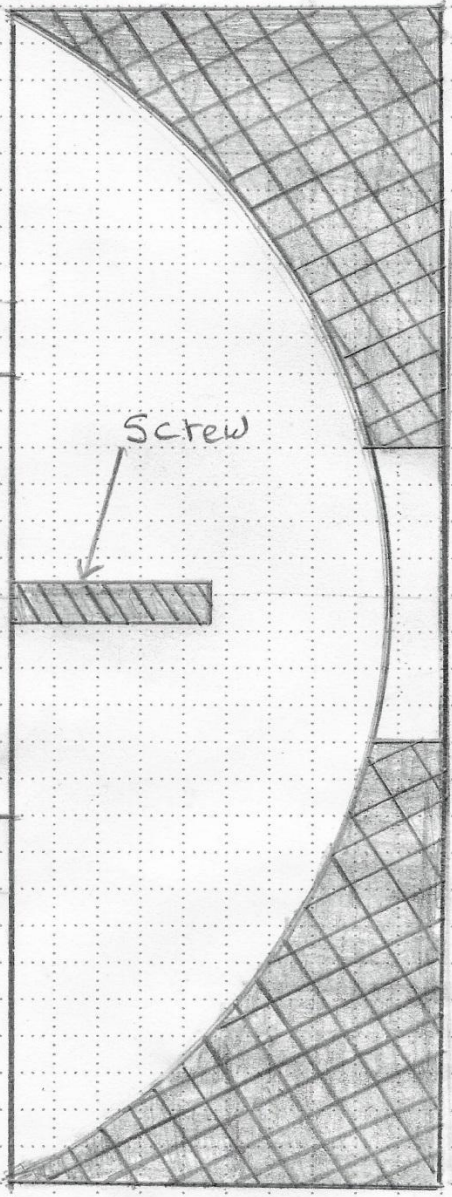




chuck

Jaws

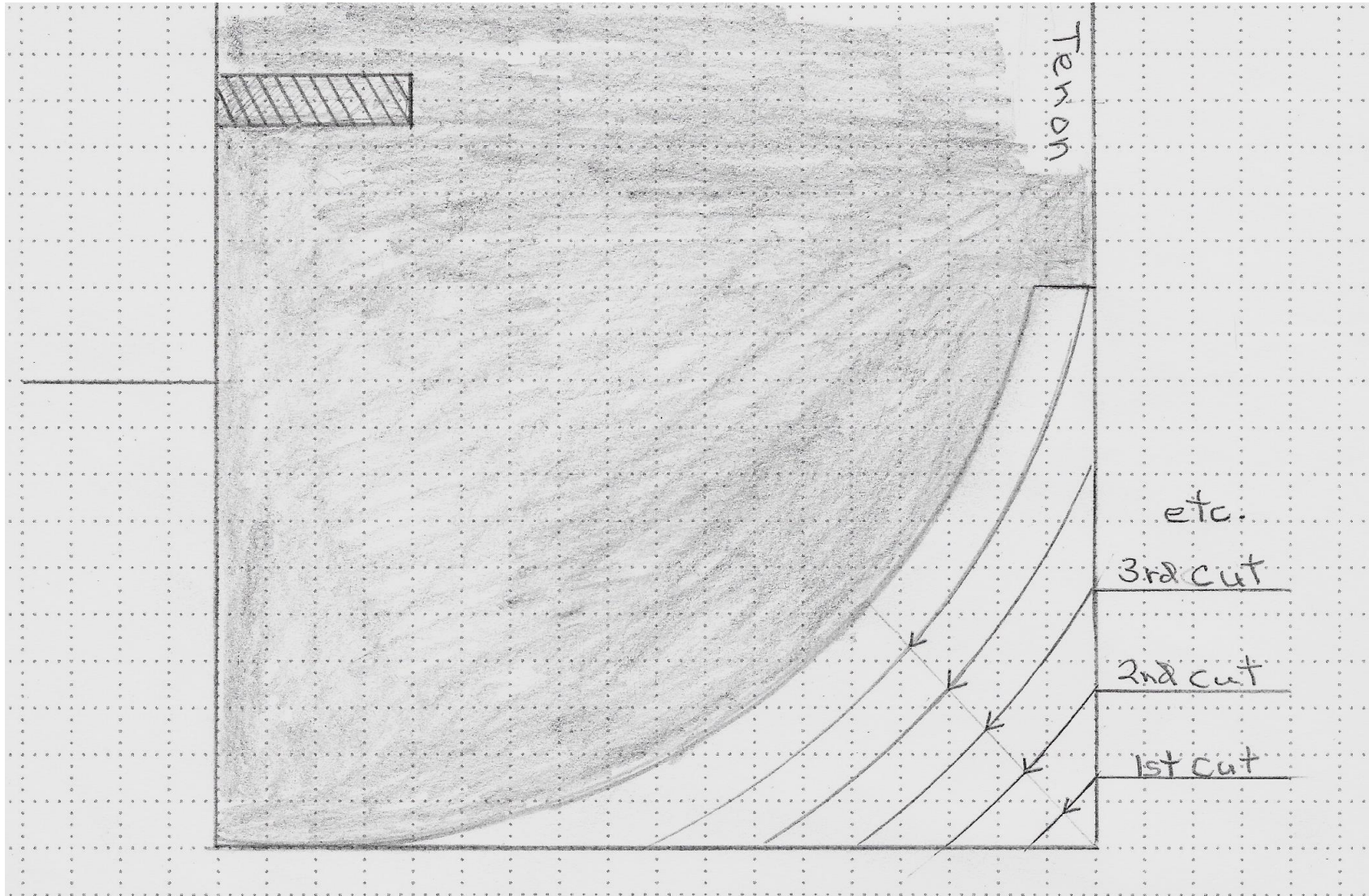
Screw



Order of turning (bottom/ outside)

- Set up your toolrest so that your bowl gouge is at the **center**.
- True the face.
- True the edge.
- Mark a diameter for a tenon or recess:
1/3 the outside diameter.
- Using a series of push and pull cuts, shape the bowl from the bottom to the top. Do so in a progressive manner.
- Use a **scraping cut** to refine the shape.
- Use a **light shear cut** to smooth the surface.
- Sand.

Turning the Outside of the bowl



Measure the bottom for the size of your chuck.

Use a **caliper**, a **ruler**, a **compass**, or make a **Go/no go** template.

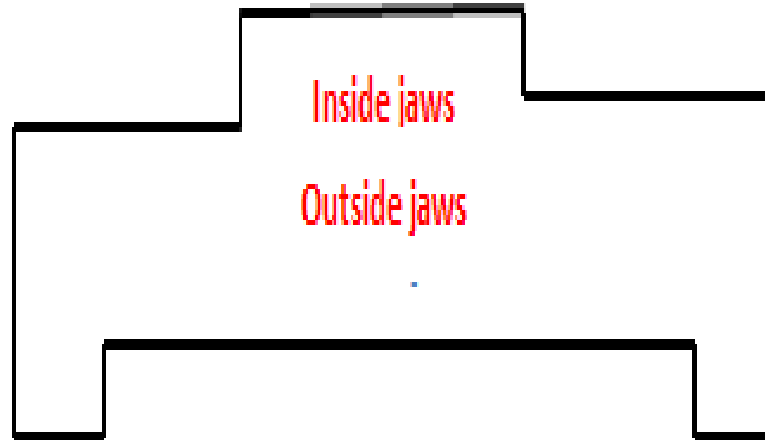
These are also known as a:

Yes/No Template

Maybe/Sort of Template

Uhh /Hmmm Template

When in doubt, at least take a **SWAG**.

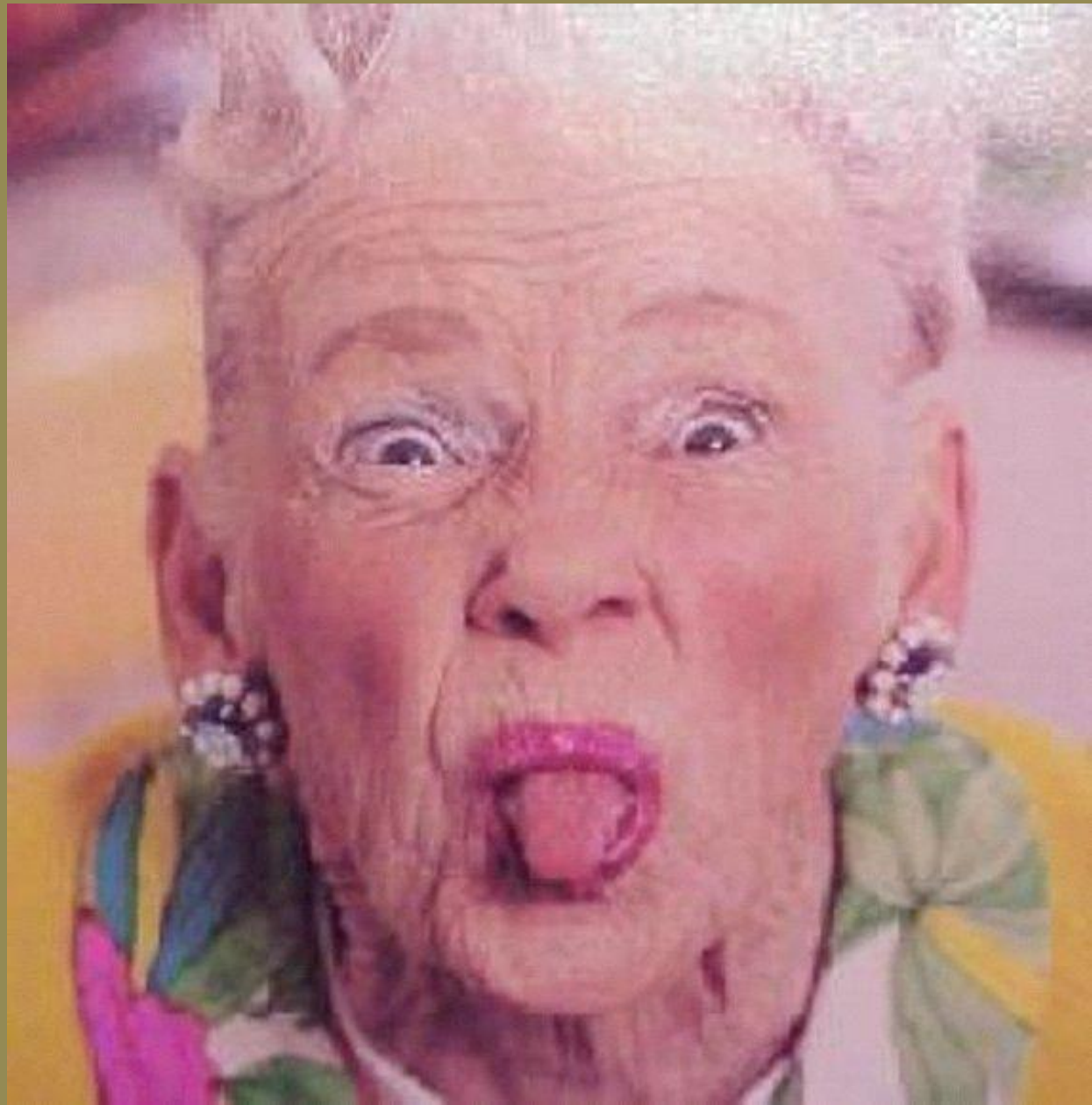




Tenon

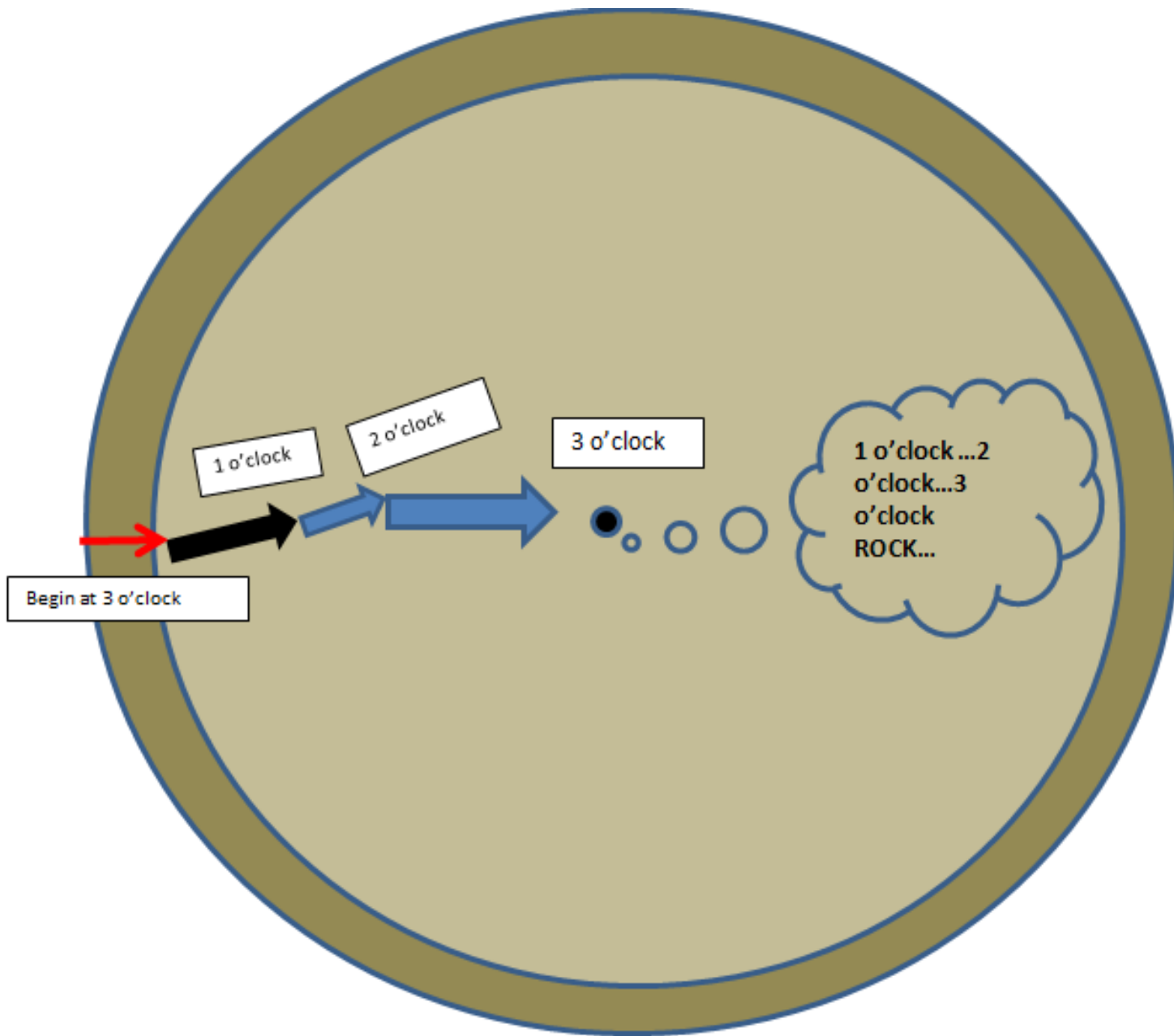
Recess



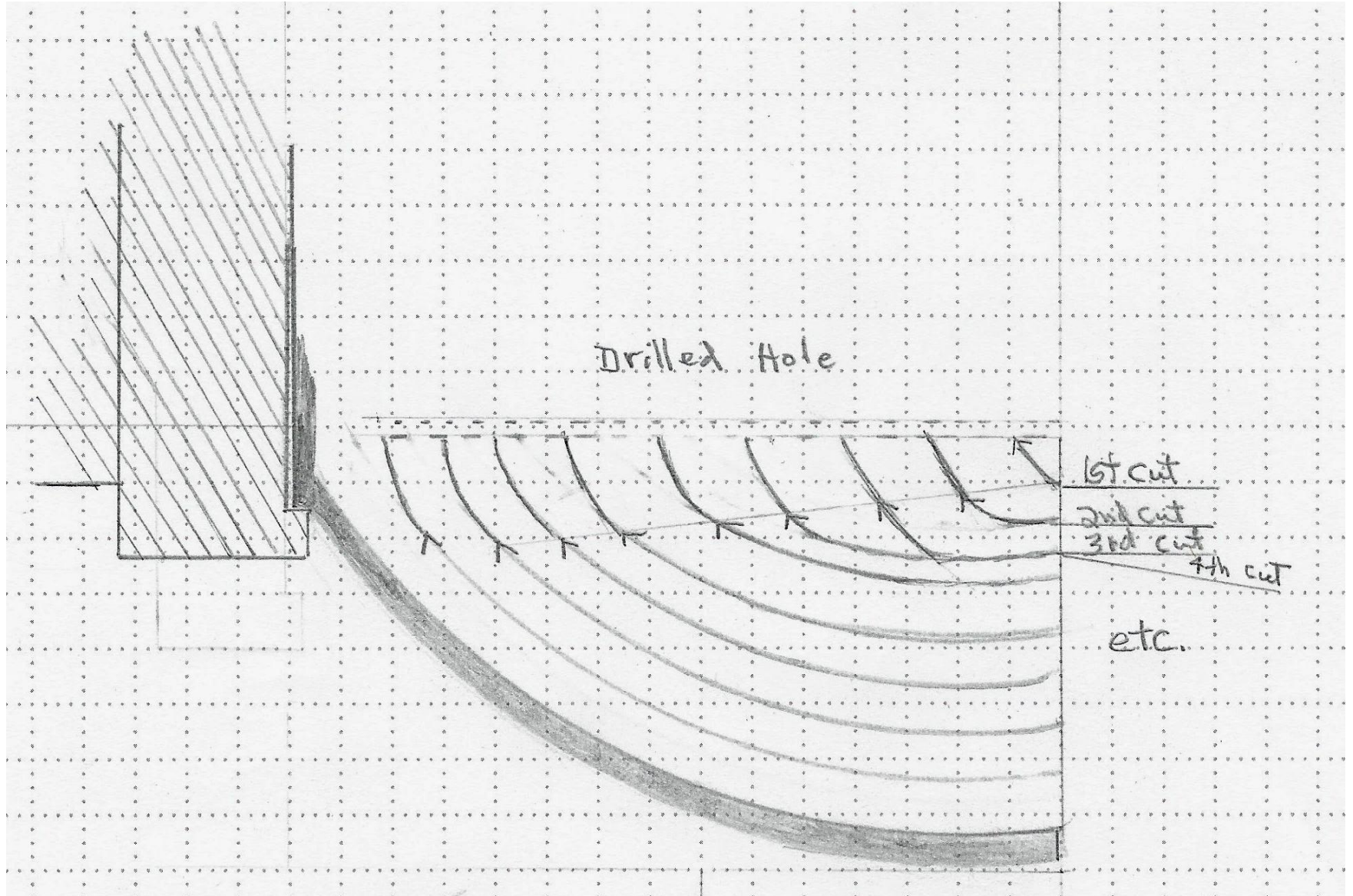


Order of turning (top/inside.)

- Reverse the bowl. Secure the tenon onto the chuck.
- Drill a guide hole.
- True the face.
- Begin removing wood at the center. The gouge in the **3 o'clock position.**
- As soon as you have bevel support and the tool begins to cut, change to the **1 o'clock position** by lowering the handle.
- Arrive at the center at the **2 o'clock position.**
- Achieve the correct **thickness** and **depth.**
- Scrape and/or sand.



Turning the Inside of the Bowl







MAKE IT STOP



STOP LOOKING AT MY SCREEN

