

Shavings

DETROIT AREA
WOODTURNERS



January 2007

<http://www.DetroitAreaWoodturners.org>

Editor Ruby Cler

Past President's Message

Dear Members,

The Detroit Area Woodturners was founded on April 2, 2000. Our purpose was to provide a woodturning club, in the North East region of the Detroit Metro Area. We sought to make it's mission similar to the AAW's: to promote excellence in woodturning, provide a friendly forum for an exchange of ideas and the opportunity to socialize with others who enjoy woodturning.

It has been a good run for me. We have taken the club from 15 members to well over 100 , with our meeting averaging 45 members and reaching a peak at the last meeting of 67. Wow, what a turnout that was!

On behalf of the Board and membership, I would like to thank Bill Schrodt, our long standing secretary, who is also stepping down, for his dedication to the club.

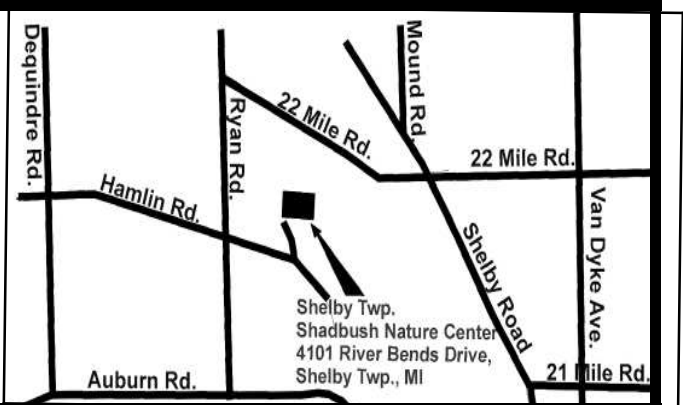
The most important things, that I have gained from my five years as president, are the friends that I have made. My progress as a woodturner has seen great improvement, thanks to all the networking, both within our club and at the national level. It has given me the motivation to strive to become a better woodturner and friend.

Please give your support to the new officers who were elected at the December meeting. Remember, take responsibility for your club by being committed to it. Remember to maintain high safety standards and keep your tools sharp.

Join the AAW Today!!



Next Meeting will be January 21st, 2007. Highlights will be an Introduction to turning. The Detroit Area Woodturners meet at the Shelby River Bends Park, Shadbrush Nature Centre, Shelby Township, MI, from 2:00 p.m. to 4:30 p.m. The Park is located on Ryan Road between 21 and 22 Mile Roads opposite the Hamlin Road junction. All visitors are welcome.



DAW Calendar of Events

The DAW meets the **third** Sunday of each month, unless adjusted for holidays, September through June. General Meetings are scheduled from 2:00 PM to 4:30 PM. Executive meetings are open to all club members:

January 21 - General meeting.

Beginning Turning with Greg Smith.

February 10 - demo by Al Stirt

February 11&12 th - Hands on workshops with Al Stirt sponsored by our club

February 18 - General meeting

Upcoming Professional Demos

Taking classes and watching professionals demonstrate is a great way to improve one's level of turning and knowledge.

Al Stirt will be doing a one day demonstration, on February 10th, 2007. The cost will be \$35, which includes lunch. The demonstration will be followed by two, one day hands-on workshops, February 11 and 12th. The cost is \$150. Registration information will be available at the next DAW meeting.

Nick Cook Seminar

Recently, a number of DAW members travelled to Holly, and attended the Nick Cook Seminar hosted by the Michigan Association of Woodturners. Nick is a very talented turner. He demonstrated a large number of the turnings, he is noted for. They progressed from easy honey dippers to more difficult pieces like the angels and platters with burnt rims. Below are pictures of Nick holding an angel he made and working on a pepper mill. All who attended, agree that the experience helped further their own turning skills.



DAW Officers - Here to Help!

Please find below, a list of all the 2007 DAW Officers and Committee members. It is through their efforts that the club runs so smoothly. Should you have any concerns or wish to help out in one area or another, please feel free to contact any of these people. It is through the effort,s of these volunteers, that we continue to grow. We value your input.

Elected Officers

President	Mike Foydel	(586)294-8777	mfoyd@comcast.net
1st VP	Frank Marabate	(586) 246-0503	fmarabate@comcast.net
2nd VP	Bob Dailey	(248) 373-1748	sokkerref@aol.com
Secretary	Don Kessler	248-627-1181	wood-guy@charter.net
Treasurer	John Fitzpatrick	(248) 608-6972	john-elliefitz@sbcglobal.net

Committee Members

Newsletter	Ruby Cler	(519) 945-0647	rubycler@sympatico.ca
Asset Manager	Ron Sztumerski	(248) 689-5615	rsztumerski @ wideopenwest.com
Librarian	Glenn Lieving	(586) 726-2856	glieving@comcast.net
Librarian	Dave Earl	(248) 544-8947	djearl@wowway.com
Membership	Greg Smith	(248) 649-3565	gregsmith@aol.com
Resale	Dave Wiltse	(248) 625-5347	
Mentor Program	Chet Bisno	(586) 254-7605	chet.bisno@gmail.com

Library Notes from Glenn

Frank Goetti donated the booklet '**Woodturning Notes**' by **Allan Batty**. As stated in the intro, "These jottings are designed to jog your memory on the simpler but all important basic points which even the best of us from time to time forget."

The three DVD set '**Turn it up**' with **Jimmy Clewes** has been acquired. Volume 1 includes a coloured form turned with hand carving. Volume 2 covers a natural-edge bowl plus a lidded box. Volume 3 illustrates a double natural-edge turning and a unique multi-offcentre sculpture.

In Memory of Frank Sudol (December 2006)

Frank left us at the age of 72. He was known as one of the world's leaders in the woodturning community, exciting aficionados and art collectors with his style of piercing thinly milled birch. He created works known for their color, animal shapes and woven filigree designs.

Frank lived in Paddockwood, Saskatchewan Canada and was a member of the Prince Albert Woodturners Guild. Frank was also a member of the AAW for many years. He was to be one of our featured demonstrators at the summer 2007 Portland Symposium.

Frank was an inspirational speaker. In one interview with a local newspaper, he shared his philosophy for being a successful artist. "The message for my students is you will never be remembered for what you copied, but you will be remembered for what you created ...Once you reach inside, you will have original work." He is survived by his partner Lois Laycraft and his Children.

Frank Sudol was presenter at some of your club meetings, and taught several of our members. He will be greatly missed by all who met him. Besides his love of turning and art, he is well remembered for his philosophy.

Rest in Peace.



Don't Forget the Meeting Door Prizes!!

Door prizes are an important part of each meeting. Members enjoy getting the prizes. The monies, from the raffle, pay for things like operating expenses. Please bring along any extra wood, tools or other items you feel you can afford to donate to our prize table.



22606 Corteville
Saint Clair Shores, MI

Stamp



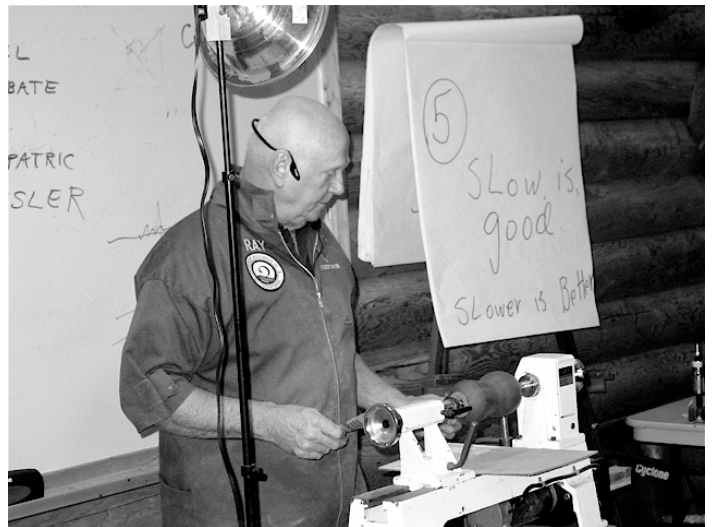
Pleasure in the job, puts perfection in the work.

Aristotle

Sanding and Finishing

Demo by Ray Frase

At the December meeting, Ray Frase did a demonstration on the use of sandpaper when finishing your turned objects. One, of the many things that Ray emphasized, is the need to go through the grits, starting where you think, in order to eliminate tool marks. If that means 60 or 80 grit, then that's where you should start. After each grit, wipe and/or blow off the piece, so that you remove any of the old bits of sand from the previous grit. Ray also takes each new piece of paper and rubs it over a metal edge, to knock down any grit that might be high enough to cause a scratch.



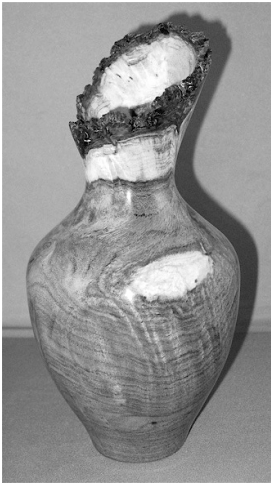
Ray also stated that when sanding the piece on the lathe, you need to go slow, so that there is no heat build up. Heat created when sanding can leave heat checks, small cracks, in the wood. When sanding his work, Ray has his paper very organized and showed us several holders for his paper and sanding mandrels. We learned that sanding and finishing were every bit as important as the actual turning. Ray brought his complete arsenal of power sanders, which included electric drills and several pneumatic ones. The random orbital Grex model is my personal favorite. When attaching sandpaper to his mandrels, Ray doesn't use round disc inside bowls because they leave marks. Instead he puts a square piece on that he then cuts off all the corners making it an 8 sided shape that conforms better to the side/bottom transition.

After Ray has sanded a piece by going thru through grits up to 400, he wiped the piece down with seal tight. This was a new idea for me and I now have another use for my end grain sealer. Then, with the sealer on the piece, Ray proceeded to sand through several more grits. A bit of a slurry was created which helps to fill any open pores in the wood. Next Ray showed us the Beall buffing system and used it to finish the piece. When passed around the finish was very smooth.

Thanks Ray for taking the time to share with us so many great ideas.

Mike Foydel

Member's Gallery



Vase by
Bob Dailey

Christmas ornaments
by
Mark Semann

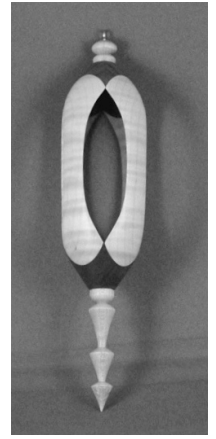
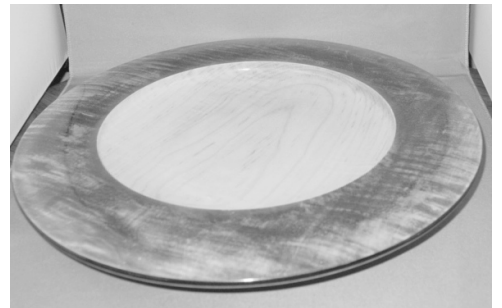
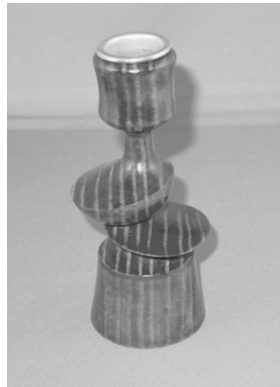


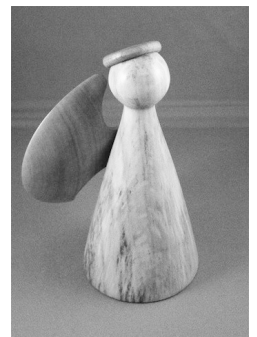
Plate and off-set by Greg Smith



Goblet and off-set
by
Steve Kujawa



Angel by Mike Foydel



Peppermill by Mike Foydel

Hollow form by Bob Dailey





Tip One - How to stain wood black:

Vinegar Steel Mix - also called Iron Acetate

A. Let a jar with vinegar and steel wool stand for a week.

B Brush sponge or pat onto wood

Wood such as Walnut, Oak, Elm, and mahogany contain a lot of tannin and will then turn black.

It is safe to use items coloured this way for food. For ultra black, apply black dye after this process.

Tip Two - EEE - Ultra Shine by Beaut Polishes an Australian Company.

Their Web site is www.ubeaut.com.au

Available at Craft supplies and Penn State.

EEE is a cut and polish paste wax containing **Tripoli** powder (also known in Australia as Rotten Stone) an ultra fine abrasive. The polish is designed to be used in conjunction with Shellawax Cream & liquid , Mylands or other friction shellac finishes. It can also be used as a finish in its own right on plastics and some stone.

EEE - Ultra Shine has the ability of removing sanding marks from most wood and can greatly reduce your sanding time while giving a blemish free surface pre-polished and ready to apply your finish to.

If you sand to 240 grit, then use EEE it will give you about the equivalent of sanding with 1200 grit or more. The higher grit abrasive paper you use before using EEE the better your finish will be. If you sand to 1200 grit and then use EEE you will get about the equivalent of sanding up to somewhere between 2000 & 4000 grit depending on the material you are sanding.

In most cases, what you will be left with, is a surface that shows no sanding marks and is ready to have a friction polish, such as Mylands or Shellawax or Shellawax Cream, applied to it as a final finish, which is guaranteed to knock your eyes out.

Many other finishes will also be greatly enhanced by using EEE - Ultra Shine to finish the finish. These include Danish oil, polyurethane, nitrocellulose lacquer, French polish, spirit varnish, spa vanish, etc.

For Sale

For Sale - Jet 12" (JWL1236) lathe and all accessories, plus 2 extra tool rests and mobile base. All in A1 condition. \$350.00. Contact Bob Daily 248.373.1748.

Free Plywood

The last issue of American Woodturner had a project for making a stand to assist in cutting logs. I have acquired free plywood in the past that would be good for this. Go to your nearest electrical supply house and see if you can get their empty spools from wire and cable. Some have even nicer plywood, that looks like baltic birch, that could be used for smaller projects or fixtures.

Loel

Welcome to New Members

As our club continues to grow, we need to turn our attention to the many new friends. Listed below are the new members for November and December. Please make sure you give them a warm welcome at our meetings and events.

November New Members	December New Members
New members Roger Schoenhals, Lake Orion Bob Hannah, Rochester Hills Tony Ferreyra, Brighton John George, Clinton Twp. William Meyer, Warren Steve Rohr West, Bloomfield Richard Touchette, Shelby Twp. John Williams, Roseville	Ed Coe, Bloomfield Bob Batistoni, Centerline Eric Buchfink, Commerce Twp Melissa Moore, Commerce Twp. Henry Alan, Warren Mat Brown, Shelby Twp Glenn McCullough, Chesterfield