

Shavings

September 2014



Providing an environment that fosters the art and craft of woodturning

A publication of the Detroit Area Woodturners

Members

Board Members:

- President:Phil Stevens
- 1st VP:Roger Meeker
- 2nd VP:Dennis Montville
- Secretary:Roger La Rose
- Treasurer:Chuck Lobaito

Committee Members:

- Asset Manager:Alfred Schembri
- Librarian:Terry Williams
- Member Chair:Jim Scarsella
- Mentor Program:Ray Frase
- Newsletter Editor:Craig Drozd
- Photography:Jack Parmenter & Roger Meeker
- Door Prizes:TBD
- Resale Chair:Sam Failla
- Video:Chris Miller
- Web Site:Roger Meeker

Chapter Information

The **Detroit Area Woodturners** (DAW) is a local chapter of the **American Association of Woodturners** (AAW). The AAW is an international, not-for-profit organization dedicated to the advancement of the woodturning craft. Our mission is to provide information, education, a meeting place, and an effective organization or all who are interested in turning wood.



The DAW web site can be found at: <http://detroitareawoodturners.com>



The AAW web site can be found at: <http://www.woodturner.org>

Membership

Yearly chapter dues are \$30 per individual or \$35 a family. Membership is for the calendar year. These dues help the club provide tools for our monthly demonstrations, bring in outside demonstrators, have a yearly picnic and other club related activities.

Renewal forms are mailed to current members in November of each year.

New members can obtain a membership form from the website under the CHAPTER INFO tab.

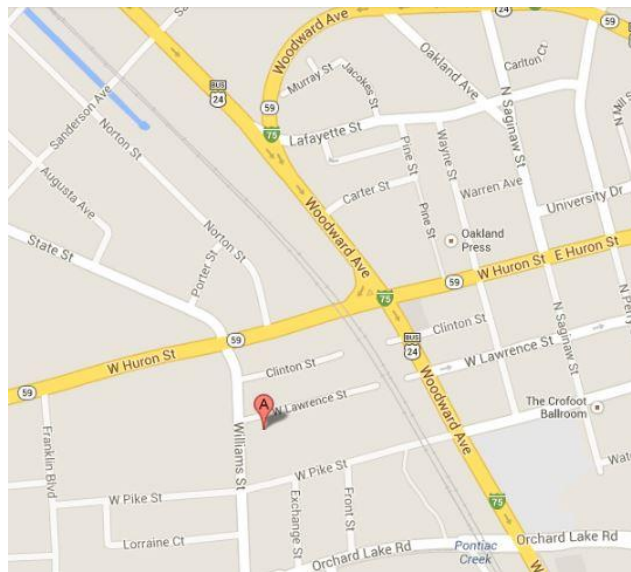
[Member Registration Form](#)

Meeting Location

The DAW will have a new home starting this September. Our Meetings are on the third Sunday of the month starting at 1:30 pm and ending by 4:00 pm. We will meet at the [Pontiac Creative Arts Center](#) located in Pontiac, Michigan, just south of M-59, 2.5 miles west of I-75 and 1 mile east of Telegraph road.



**Our next meeting is
Sunday October 19th 2014.**



Address: 47 Williams St, Pontiac, MI 48341
Phone: 248-333-7849

Upcoming Events

DAW October meeting
Sunday October 19, 2014 at 1:30 PM
At the PCAC

**6th Annual Expressions in Wood Expo -
Eau Claire, WI**
October 25-26, 2014

**AAW's 29th International Symposium in
Pittsburgh** June 25-28, 2015
<http://www.woodturner.org/?page=2015Pittsburgh>

Library

The library is available for all current club members. We have many books, magazines and DVDs available to check-out. A list of materials is available on the DAW website.

Library
Please help us maintain the library by returning checked out items promptly.

The library is maintained by Terry Williams. Terry is always willing to take requests for new material.

Sunday September 14, 2014 Meeting Notes



President Phil Stevens conducts the September club meeting

- There were three entries in this month's Presidents Challenge; one winning ticket was drawn for a prize. Remember, everyone that participates in the challenge each month gets a chance to win a prize.
- Guests and new members were introduced.
- Bill Dwyer - President of the arts center introduced himself and welcomed the club members to the PCAC.
- Phil Introduced the board Officers
 - Dennis will be stepping down from the 2nd VP position at the end of this year. If you're interested in running for this position please see a board officer. Elections are held each year during the December meeting.
- Introduction of the committee members
 - Chris Miller has taken over the video duties from Paul Neuburger.
 - Ron Black has stepped down from the resale chair position; Sam Failla is now filling this role.
 - Joy Lobaito has stepped down from the door prize position. We are looking for someone to fill this.
 - We need a volunteer for the coffee setup and takedown each meeting. The coffee will now be stored at PCAC making these duties much easier.

- Education chair is a new position currently filled by Russ Holmes. Once Russ gets the classes up and running this position will transfer to Paul Neuburger.
- Don Doyle is the new fundraising chair.
- Vince Hellmann talked about the work that occurred building out the new training room. He also thanked all the volunteers that put in many long hours this summer. There is still a lot of work that needs to be done to complete the build out. If you can help out please contact Vince.
- Performance Line Tools is giving club members 10% off the purchase of major items.
- Sam Failla talked about the upcoming Festival of the Senses. He is looking for volunteers to work a 3 hour shift at the event.



- Phil discussed the plan for the next three meetings
 - Mike Foydel will be demonstrating at the October 19 meeting.
 - Steve Rohr will be demonstrating deep hollowing at the November 16th meeting.
 - December is the annual Christmas party.
- Tim Yoder will be the guest demonstrator in April. More details will be coming.
- June 25th 2015 is the AAW symposium in Pittsburgh.
- Looking for someone to lead a chapter group challenge effort for the AAW symposium.

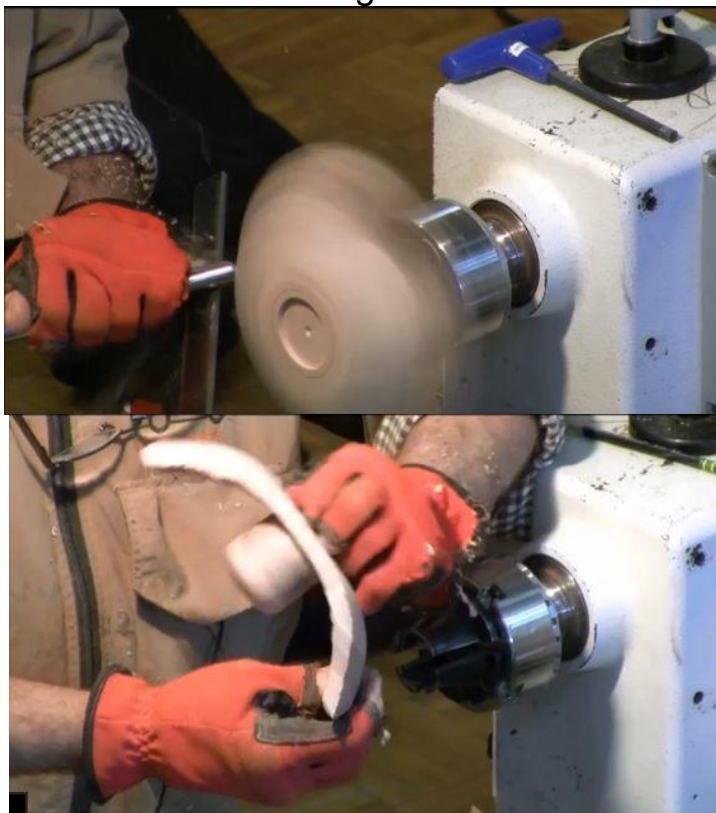
- Ken Kiernicki discussed a DAW Gallery showing at the [Starkweather Arts Center](#) in Romeo. The will be October 2015. (Over a year away) There will be a \$25 entry fee for up to three turning pieces. Get with Ken if you're interested in participating so we can gauge the level of interest. The entry deadline will be September 12th 2015. All pieces entered will also be for sale during the show.
- Ken Kiernicki is looking for volunteers to help other members learn how to price their work.
- We are going to be moving to a year round program. This means summertime monthly meetings starting next summer.
- Phil discussed the advantages of moving to the new [Pontiac Creative Arts Center](#). This includes the classes the club will be running. We will need volunteers to help work the classes.
- PCAC also has a membership. It would be nice if each DAW would consider joining PCAC. An individual membership starts at \$20.
- The club still needs tool donations for the classes. Without donations we will need to purchase the items. If you have anything to donate please see Alfred.
- Support the vendors that support the club; [Victor](#) and [Don](#) and Rockler.
- Don Doyle talked about a new tool roll with the club logo and your name. The roll will be \$45 with \$5 going back to the club.
- We want more Door Prize donations. These help the club.
- We are going to try a 50/50 raffle starting today.
- Club dues will be going up to \$40 Individual / \$50 Family in January. This will help the club build out the training room which will benefit all the club members.
- We are also considering a lifetime membership or an extended membership at a reduced rate.



Demonstration by Jerry Bufalini



Jerry demonstrated how to turn a winged bowl.



You can see the video at [Winged Bowl](#).
The Presentation material can be accessed [here](#).

Show & Tell



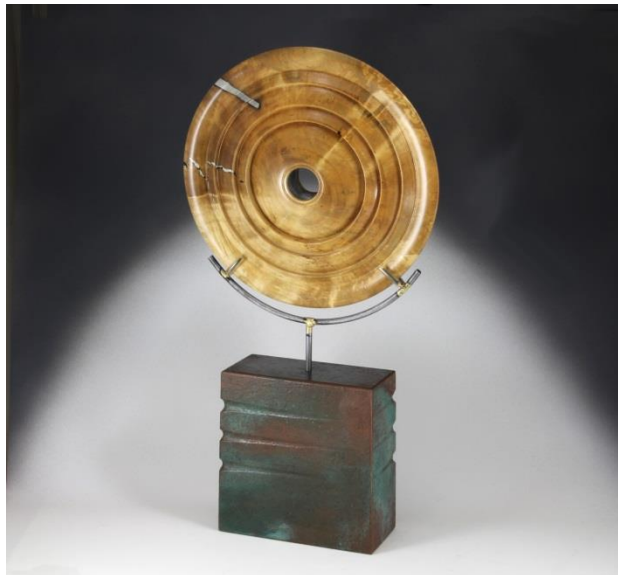
Show & Tell



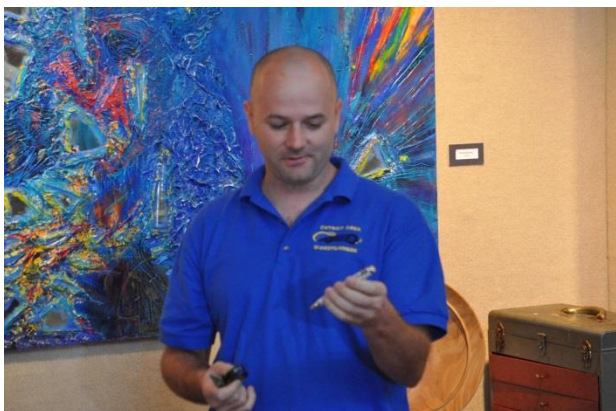
Show & Tell



Show & Tell



Show & Tell



Show & Tell



Faces in the Crowd



Faces in the Crowd



Faces in the Crowd



Wood of the Month – American Beech



Common Name(s): American Beech

Scientific Name: *Fagus grandifolia*

Distribution: Eastern United States

Tree Size: 100-130 ft (30-40 m) tall, 3-5 ft (1-1.5 m) trunk diameter

Average Dried Weight: 45 lbs/ft³ (720 kg/m³)

Specific Gravity (Basic, 12% MC): .54, .72

Janka Hardness: 1,300 lbf (5,780 N)

Modulus of Rupture: 14,900 lbf/in² (102.8 MPa)

Elastic Modulus: 1,720,000 lbf/in² (11.86 GPa)

Crushing Strength: 7,410 lbf/in² (51.1 MPa)

Shrinkage: Radial: 5.5%, **Tangential:** 11.9%, **Volumetric:** 17.2%, **T/R Ratio:** 2.2

Color/Appearance: Beech is typically a pale cream color, sometimes with a pink or brown hue. Veneer tends to be slightly darker colored, as slicing the veneer usually requires the wood to be prepared with steam, which gives the wood a more golden tone. (See scan below.) Flatsawn surfaces tend to be very plain, while quartersawn surfaces exhibit a silvery fleck pattern.

Grain/Texture: Grain is straight, with a fine to medium uniform texture. Moderate natural luster.

Rot Resistance: Beech is considered non-durable or perishable; it is also susceptible to insect attack.

Workability: Overall good workability; it machines well, and glues, finishes, and turns well. Beech also responds superbly to steam-bending. It does, however, have a large amount of movement in service, so movement and wood stability must be taken into account.

Odor: No characteristic odor.

Allergies/Toxicity: Although there is no confirmed safety data on American Beech, the closely related European Beech (*Fagus sylvatica*) has been reported as a sensitizer. Usually most common reactions from this related species include eye, skin, and respiratory irritation. See the articles Wood Allergies and Toxicity and Wood Dust Safety for more information.

Pricing/Availability: Within its domestic range, Beech is readily available and affordable. With its high density and hardness, it may be a cheaper alternative to Hard Maple in some applications.

Sustainability: This wood species is not listed in the CITES Appendices or on the IUCN Red List of Threatened Species.

Common Uses: Lumber, veneer, flooring, crates/pallets, railroad ties, musical instruments, furniture, turned objects, and other small wooden objects.

Comments: American Beech is sometimes underrated and under-appreciated: which may be due to its somewhat bland appearance. Yet considering its decent strength and hardness—and its comparatively low cost—Beech represents an excellent value for woodworkers.

Pictures

Sanded



Sealed



End grain



End grain zoom



Benefits of joining the American Association of Woodturners (AAW)

- Six issues of American Woodturner annually
- Automatic participation in periodic drawings for prizes
- Access to all past issues of American Woodturner, viewable online through the website Members Area.
- Access to machine-readable American Woodturner issues for those members who are visually impaired and utilize screen-reading software - contact the webmaster if this applies to you.
- Marketing opportunities on our website for artists, collectors, galleries, and museums.
- Group rates for individual and chapter insurance.
- Savings of up to 50% on AAW merchandise, including project books, DVDs, logo apparel, and more.
- Eligibility to apply for AAW Educational Opportunity Grants.
- AAW Forum and member-only access to articles and resources on our website.
- Eligibility to vote in AAW board elections if a member before the end of August in that year.
- Eligibility to apply for membership in the Professional Outreach Program (POP).
- Access to POP Fellowship grants.
- Exhibit opportunities - AAW members may enter work for the annual juried member exhibit featured at the Symposium, the Gallery of Wood Art in St. Paul, and other venues.
- Annual International AAW Woodturning symposium.
- Demonstration opportunities at AAW symposiums.
- AAW "Resource Directory" that contains a complete listing of contact information for members, local chapters, demonstrators, and other woodturning resources. Updated listings are available to members through the AAW website.
- More than 300 AAW local chapters that offer workshops, camaraderie, opportunities to share ideas and techniques, and access to lending libraries, discounts, and volume purchases.

Russ Holmes wants you for breakfast

There is a breakfast get together every Tuesday Morning at 8:00am, held at the **Avenue Restaurant** on Woodward Ave at 13 Mile Rd.

All are welcome.

Links for Suppliers

★ When ordering from a star supplier, be sure to inform them of your Detroit Area Woodturners membership Discounts may apply – usually 10% or Club Credit)

Hartville Tool

<http://www.hartvilletool.com>

800-345-2396

Woodturning Supplies



Landfill Lumber

<http://landfilllumber.com/>

586-563-0441

Victor Lewandowski -Woodturning Stock



Craft Supply

<http://www.woodturnercatalog.com>

800-551-8876

Woodturning Supplies

Richard Lauwers

810-724-2263

Kiln dried oak and maple

Rubber Chucky Products

<http://rubberchucky.com>

248-877-0828

Woodturning Supplies



Rockler

29918 Woodward Ave, Royal Oak, MI 48073

248-543-5110

DAW Discount only at this location



Packard

<http://www.packardwoodworks.com>

800-683-8876

Woodturning Supplies

Woodcraft

<http://www.woodcraft.com>

800-225-1153

Woodworking and hardware

Klingspor

<http://www.woodworkingshop.com>

800-228-0000

Abrasives and woodturning supplies

The Sanding Glove

<http://www.thesandingglove.com>

800-995-9328

Sanding Supplies

Choice Woods

<http://www.choice-woods.com>

888-895-7779 or 502-637-1190

Log 2 Lumber

<http://log2lumber.com>

248-535-5035

Chuck Lobaito – Portable saw mill

Links for Clubs and Turners

AAW - National Organization

Web Site: <http://www.woodturner.org/>

Michigan Association of Woodturners (Holly, MI)

Web Site: <http://www.michiganwoodturner.org>

Detroit Area Woodturners (Shelby Twp, MI)

Web Site: <http://www.detroitareawoodturners.com/>

Blue Water Area Woodturners (Richmond, MI)

Web Site: <http://www.bluewaterareawoodturners.org>

Grand River Woodturners Guild (Grand Rapids, MI)

Web Site: <http://www.grandriverwoodturners.org>

Ohio Valley Woodturners Guild (Cincinnati, OH)

Web Site: <http://www.ovwg.org>

Arrowmont School of Arts and Crafts

Web Site: <http://www.arrowmont.org/>

Marc Adams School of Woodworking

Web Site: <http://www.marcadams.com/>

John C. Campbell Folk School

Web Site: <http://www.folkschool.org>

Woodcraft of Sterling Heights (586) 268-1919

Web Site: <http://www.woodcraft.com>

Al Stirt: Woodturner, Artist and Teacher

Web Site: <http://www.alstirt.com>

Rockler

Web Site: <http://www.rockler.com>

We Need Your Help

From the Editor

Articles are due at the monthly meeting (for example, submit at or before the February meeting for the February Newsletter) and should be submitted to Craig Drozd at Craig.Drozd@outlook.com.

Member Projects

If you have a woodturning project that you would like to showcase to our club members, you can send me detailed information about your project with pictures.

Articles on New Woodturning Techniques and Tools

If you come across an article, wish to write an article on a new wood turning technique, care to write a review or want to forward on a review of a new wood turning tool, please feel free to do so. Any photos will be helpful.

Shop Talk

Everyone has a different way of doing things in their shop and everyone's shop is different in many ways; whether it's size, location, or physical layout you are probably doing something that would be helpful for others to see.

Members Questions & Answers

Members are asked to submit woodturning, finishing and tool questions to our resident experts to answer. There are no dumb questions; someone else in the club may have had the same questions.

Classified Ads

Ads for woodturning and woodworking related items are free to members. Send detailed information with pictures.

Wood to Turn

Do you have wood, need wood or know about wood that is available for turning? Let me know and I'll pass it along.

From the Editor, Again

Let's make this newsletter something interesting, if you send it, we'll publish it.

Footnote

If possible, please send a digital file (I don't type very well). Thank you!